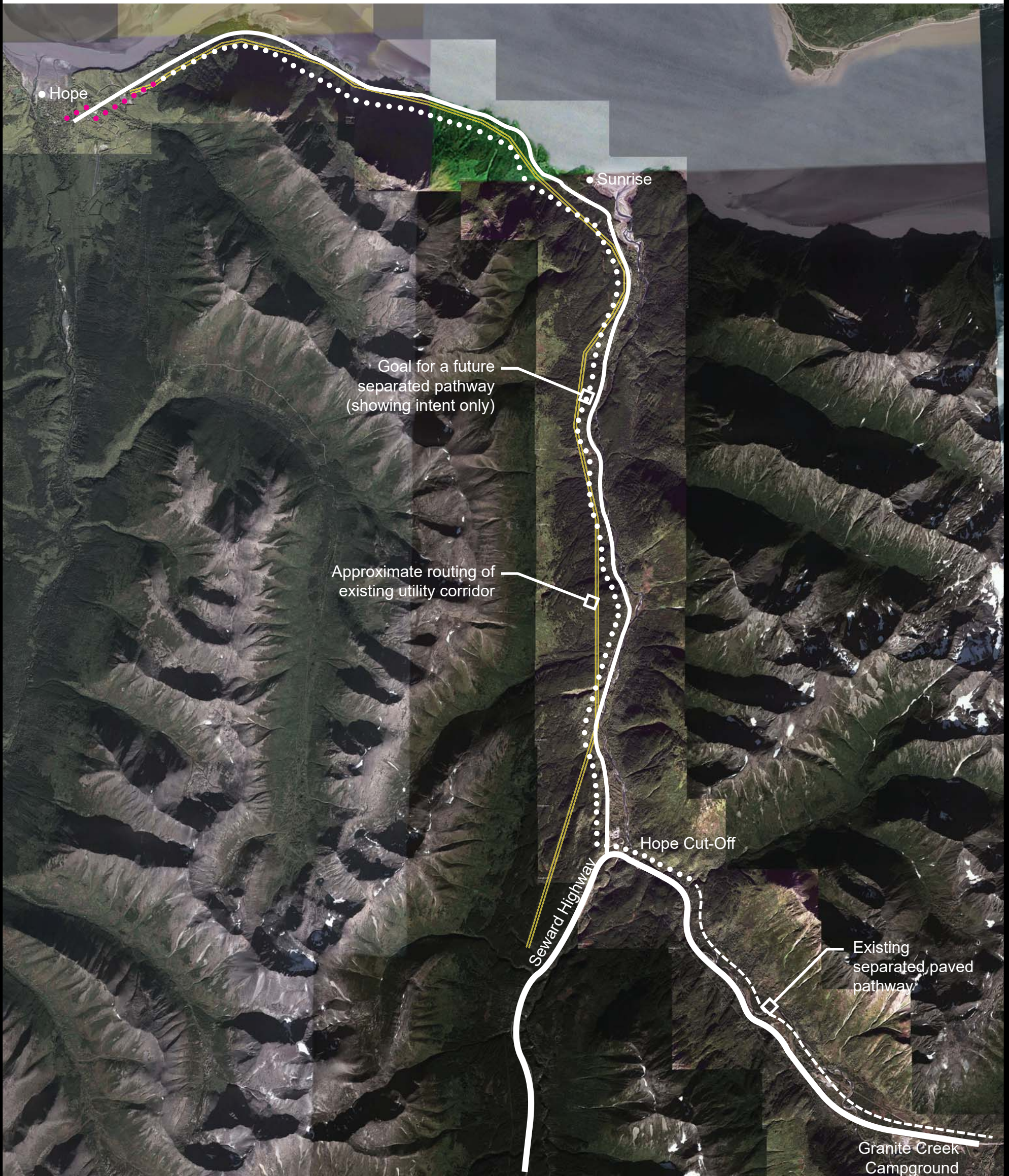


Hope Separated Path Project

A safe, non-motorized bicycle pathway from the Seward Highway to Hope

The Kenai Mountains-Turnagain Arm (KMTA) National Heritage Area would like to assist KMTA communities and partners in developing a non-motorized, bicycle pathway through the National Heritage Area. We are seeking community input for a possible route along the Hope Highway. This would offer safe passage for cyclists and other non-motorized users who currently use the narrow, winding Hope Highway as a recreational route.



Kenai Mountains - Turnagain Arm National Heritage Area

The designation of Alaska's Kenai Mountains-Turnagain Arm as a National Heritage Area recognizes the compelling history and culture of an area that cradles some of the most influential crossroads of Alaska's history. National Heritage Areas are designated by an Act of Congress and administered by a local non-profit. Designation has no effect on property rights. Funding for grassroots projects that enhance and preserve the area's historic, cultural, scenic, and outdoor recreational resources is provided by the National Heritage Area program through the National Park Service. For more information visit www.kmtacorridor.org



Discover the Story

Kenai Mountains-Turnagain Arm
National Heritage Area